



Snatch Block McKissick 404 Tail Board Light Champion

Product information



General:

The McKissick snatch block 404 Light Champion from Crosby is a Tail board type snatch block. Available from WLL 2 up to 8 T. Can be delivered with bronze bushing (BB) and from WLL 8 T also with roller bearing (RB).

Features:

- Bolt for opening feature is retained, to ensure no lost bolts.
- Opening feature permits easy insertion of rope without reeving, or while the block is suspended.
- Center pin equipped with pressure lube fitting.
- All sizes feature sheave grooves suited for a range of wire line diameters.
- Meets or exceeds all requirements of ASME B30.26 including identification ductility, design factor, proof load and temperature requirements.
- Meet other critical performance requirements including fatigue life and material traceability, not addressed by ASME B30.26.

... [Read more](#)

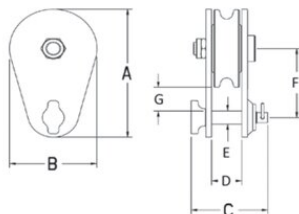
Material: Forged steel.

Safety factor: 4:1



Snatch Block McKissick 404 Tail Board Light Champion

Blueprint



Technical data

Part code	Rope Ø range mm	WLL (metric) tonnes	Sheave dia mm	Bearing	A in	B in	C in	D, in	E in	F in	G, in	Weight lb
16.15102015	8-10	2	76	BB mm	4.88	2.99	2.64	1.02	0.51	2.64	0.87	3.09
16.15102025	10-13	4	114	BB mm	7.76	4.25	3.11	1.57	0.75	4.25	1.61	7.05
16.15102098	16-19	8	152	BB mm	9.88	5.98	4.17	1.81	0.98	5.12	1.61	14.99
16.15102114	16-19	8	152	RB	9.88	5.98	4.17	1.81	0.98	5.12	1.61	14.99
16.15102169	16-19	8	203	BB mm	11.93	8.11	4.17	1.81	0.98	6.1	1.61	20.94
16.15102187	16-19	8	203	RB	11.93	8.11	4.17	1.81	0.98	6.1	1.61	20.94
16.15102230	16-19	8	254	BB mm	14.02	10.12	4.17	1.81	0.98	7.2	1.69	29.1
16.15102258	16-19	8	254	RB	14.02	10.12	4.17	1.81	0.98	7.2	1.69	29.1
16.15102301	16-19	8	305	BB mm	16.81	12.05	4.17	1.81	0.98	9.02	2.52	35.94
16.15102329	16-19	8	305	RB	16.81	12.13	4.17	1.81	0.98	9.02	2.52	35.94