



Closed Spelter Socket G-417

Product information



McKissick Closed spelter socket for steel wire rope \varnothing 8 mm up to \varnothing 102 mm. Spelter socket terminations have an efficiency rating of 100%, based on the catalogue strength of wire rope.

Features:

- Forged Steel Sockets through 38 mm, cast alloy steel 40 mm through 102mm.
- All cast steel sockets 40 mm and larger are magnetic particle inspected and ultrasonic inspected.
- Proof testing available on special order.
- Spelter socket terminations have an efficiency rating of 100%, based on the catalog strength of wire rope.
- Ratings are based on recommended use with 6x7, 6x19, or 6x37, IPS or XIP (EIP), XXIP (EEIP), RRL, FC, or IWRC wire rope.
- Strand constructed with minimal number of wires (e.g. 1x7) requires special consideration that socket basket length be five (5) times the strand diameter or fifty (50) times the wire diameter, whichever is the greater.
- Also available in self-coloured / ungalvanized version on request.

Standard: Fed Spec RR-S-550D TYPE B.

... [Read more](#)

Material: Forged steel from wire rope \varnothing 8mm up to 38mm. From \varnothing 40mm Cast Alloy steel.

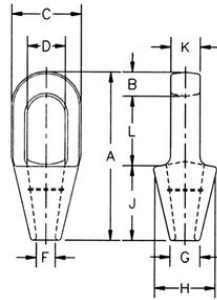
Marking: ID code and Manufacturer's symbol.

Finish: Galvanized.



Closed Spelter Socket G-417

Blueprint



Technical data

Part code	Rope Ø range mm	MBL tonnes	Finish	A in	B in	C in	D, in	F in	G, in	H, in	J in	K in	L in	Weight lb
10.101039913	8-10	12	Galvanized	4.92	0.62	1.69	0.97	0.5	0.81	1.69	2.25	0.69	2.06	0.75
10.101039931	11-13	20	Galvanized	5.51	0.69	2.01	1.16	0.56	0.94	2.01	2.5	0.88	2.31	1.5
10.101039959	14-16	30.8	Galvanized	6.38	0.81	2.64	1.41	0.69	1.19	2.64	3	1	2.56	2.49
10.101039977	18	43.5	Galvanized	7.64	1.06	3	1.66	0.88	1.31	2.76	3.5	1.25	3.06	4.23
10.101039995	20-22	65.3	Galvanized	8.9	1.31	3.62	1.94	1	1.5	3.25	4.02	1.5	3.56	7.23
10.101040019	24-26	81.6	Galvanized	10	1.44	4.13	2.3	1.13	1.75	3.76	4.49	1.75	4.06	10.49
10.101040037	28-30	100	Galvanized	11.14	1.56	4.49	2.56	1.25	2.01	4.13	5	2.01	4.57	14.24
10.101040055	32-35	136	Galvanized	12.17	1.63	5	2.8	1.5	2.3	4.69	5.43	2.22	5.08	19.73
10.101040073	38	170	Galvanized	13.98	1.94	5.39	3.19	1.63	2.78	5.2	5.94	2.46	6.1	29.19
10.101040091	40-42	188	Galvanized	15.35	2.13	5.75	3.25	1.75	3	5.51	6.5	2.76	6.73	35.98
10.101040117	44-48	268	Galvanized	17.52	2.19	6.73	3.76	2.01	3.13	6.38	7.52	3	7.8	57.23
10.101040135	50-54	309	Galvanized	19.88	2.44	7.64	4.37	2.25	3.76	7.36	8.5	3.25	8.82	78.99
10.101040153	56-60	360	Galvanized	21.5	2.76	8.5	5	2.63	4.13	8.27	9.02	3.62	9.76	104.98
10.101041759	64-67	424	Galvanized	23.5	3.13	9.49	5.51	2.93	4.49	9.25	9.76	4.02	10.63	139.99
10.101041777	70-73	549	Galvanized	25.39	3.13	10.75	6.26	3.13	4.88	10.2	10.98	4.88	11.26	220
10.101041795	75-80	656	Galvanized	27.13	3.37	11.5	6.73	3.39	5.24	11.5	12.01	5.24	11.73	275.58
10.101041811	82-86	750	Galvanized	29.25	4.02	12.24	7.24	3.62	5.75	12.24	12.99	5.75	12.24	313.06
10.101041839	88-92	820	Galvanized	30.98	4.02	12.99	7.76	3.88	6.3	12.99	14.02	6.26	12.99	399.04
10.101041857	94-102	1,005	Galvanized	33.27	4.25	14.25	8.5	4.25	7.24	14.25	15	7.01	14.02	542.34