



Swivel Regular Crosby G-402

Product information



Design: Chain swivels with out bearing. According to Federal Specification RR-C-271F.

... [Read more](#)

Material: Hot dip Galvanized - Quenched & Tempered

Marking: WLL

Finish: Galvanized

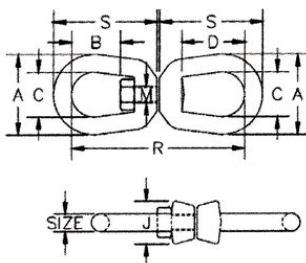
Note: The swivels are positioning devices and are not intended to rotate under load. For load swivels, see ball bearing swivels.

Safety factor: 5:1



Swivel Regular Crosby G-402

Blueprint



Technical data

Part code	Diameter mm	WLL (metric) tonnes	A in	B in	C in	D in	J in	Mmm in	Rmm in	S in	Weight lb
11.451016037	8	0.57	1.63	0.81	1	1.25	0.81	0.38	3.56	2.06	0.4
11.451016055	10	1.02	2.01	0.94	1.25	1.5	1	0.5	4.29	2.5	0.71
11.451016073	13	1.63	2.5	1.31	1.5	2.01	1.31	0.63	5.43	3.19	1.32
11.451016091	16	2.36	2.99	1.56	1.75	2.38	1.5	0.75	6.57	3.88	2.49
11.451016117	19	3.27	3.5	1.75	2.01	2.64	1.88	0.88	7.2	4.29	4.01
11.451016135	22	4.54	4.02	2.05	2.24	3.05	2.13	1	8.39	5	6.24
11.451016153	25	5.67	4.49	2.3	2.5	3.5	2.38	1.13	9.65	5.75	8.95
11.451016199	32	8.16	5.63	2.7	3.13	3.68	2.99	1.5	11.46	6.77	16.36
11.451016215	38	20.5	7.09	3.88	4.09	3.88	3.75	2.24	16.69	9.92	45.86