



Multi-Position Lifting Clamp Tractel KS

Product information



Suitable for lifting plates, beams, profiles and steel constructions from any position. The KS clamp has a safety spring and, depending on the weight of the load, will only leave a mark on one side.

Features:

- Horizontal and vertical use
- Manual release
- One-sided mark
- Hardness up to 300 HB

Multi-Position Lifting Clamp KS fulfill the Machinery Directive 2006/42/FC. [... Read more](#)

Material: Manufactured without load bearing welds

Marking: CE-marked

Temperature range: -20° up to +100°C

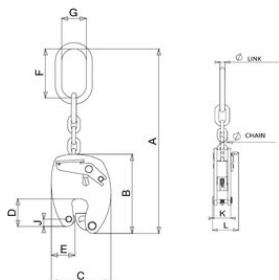
Finish: Hot epoxy coating

Warning: Never lift people with this equipment !



Multi-Position Lifting Clamp Tractel KS

Blueprint



Technical data

Part code	Code	WLL (metric) tonnes	Jaw width in	Chain Ø mm	A in	B in	C in	D in	E in	F in	G, in	J in	K in	L in	Weight lb
502100080151930	KS075 0-15	0.75	0-0.59	6	11.81	5.08	3.82	1.77	1.54	3.15	1.57	0.47	1.34	2.09	3.42
502100100201930	KS1 0-20	1	0-0.79	7	16.77	6.81	5.04	2.36	1.93	4.33	2.36	0.63	1.69	2.64	7.72
502100200251930	KS2 0-25	2	0-0.98	8	19.09	8.58	6.34	2.95	2.44	4.33	2.36	0.75	1.85	3.11	13.8
502100300301930	KS3 0-30	3	0-1.18	10	23.43	10.24	8.07	3.7	3.35	5.31	2.95	1.1	2.28	3.78	26.68