



## Connecting Link Cartec CLX

---

### Product information



Connecting link CLX grade 100 designed for secure assembly of chain slings and lifting components. Provides strong, reliable connection between chains, master links, and hooks. Precision-forged for optimal load distribution and durability.

#### Features:

- Grade 100 strength for heavy-duty lifting
- Secure connection between chain and fittings
- Available in multiple sizes and WLL ranges

... [Read more](#)

---

**Material:** Alloy steel

**Marking:** CE-marked

**Temperature range:** -40°C up to +200°C without reduction in WLL

**Finish:** Powder coated

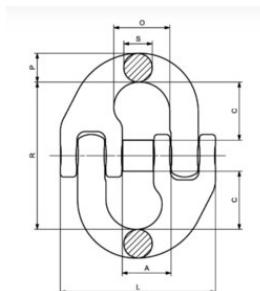
**Safety factor:** 4:1

**Grade:** 10



## Connecting Link Cartec CLX

### Blueprint



### Technical data

Part code	Chain diameter mm	Chain diameter in	WLL lb	A in	C in	Omm in	Rmm in	Pmm in	S in	L in	Weight lb
402200140430	6	1/4	3,000	0.55	0.71	0.71	1.77	0.31	0.3	1.62	0.15
402200190430	7	9/32	4,300	0.7	0.79	0.81	1.99	0.4	0.35	1.92	0.31
402200250430	8	5/16	5,700	0.75	1	0.93	2.44	0.45	0.39	2.18	0.44
402200400430	10	3/8	8,800	0.94	1.18	1.08	2.83	0.5	0.5	2.59	0.77
402200670430	13	1/2	15,000	1.1	1.42	1.31	3.44	0.75	0.66	3.25	1.63
402201000430	16	5/8	22,600	1.35	1.59	1.56	4.13	0.81	0.81	4.3	2.56
402201600430	20	3/4	35,300	1.7	1.82	1.95	4.65	1.16	0.93	5.05	5.51
402201900430	22	7/8	42,700	1.98	2.17	2.28	5.41	1.14	1.06	6	6.83
402202650430	26	1	59,700	2.34	3.25	2.91	7.7	1.57	1.18	7.22	14.99
402204000430	32	1 1/4	90,400	3.15	3.33	3.7	8.11	1.85	1.38	8.59	25.35